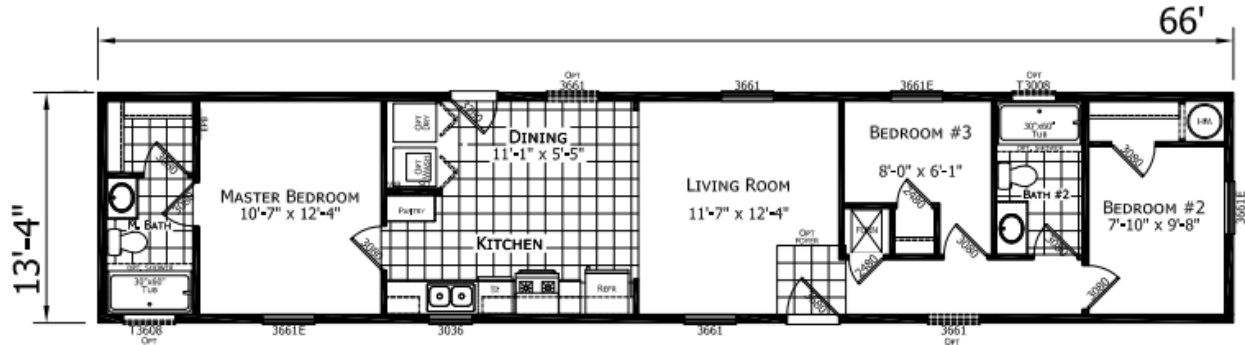


Atlantic Essentials: Model ESS-F-24805

14x70 (66) 880 Sq. Ft.



Base pricing reflected on 14x52(48)

Home Featuring:

- Deliver, block and level
- Laminate backsplash in kitchen & baths
- 12" I Beam included with 70(66') stretch
- OSB exterior sheathing for extra strength
- Upgraded snow load
- Atlantic end wall treatment package (shakes in GE peak & window centered with shutter)
- Vented closet shelving
- Mini-blinds on windows
- Upgraded gas furnace
- Furnace stack extension
- Shut-off valves at all sinks and toilets
- (1) exterior faucet
- 100 amp electric service
- Stainless steel appliances: gas range, 18cuft refrigerator, microwave & dishwasher
- 4-lite fiberglass exterior front door
- 3-panel white interior doors with passage knobs
- Low E thermal pane windows
- Extra windows in hall and dining room
- LED recessed can light in each bedroom
- (1) exterior GFI
- 1-piece fiberglass tub/shower in main bath
- Porcelain vanity sinks & elongated toilets
- White shaker cabinets in kitchen
- Shelf over refrigerator, center shelf in base cab's
- New "Ozark" (grey) vanity cabinet in master bath
- 70(66) Stretch with 3 bedroom, 2 bath option
- Feature wall in Living Room
- Recessed frame
- 2x6 exterior walls with R-19 insulation
- Vinyl Siding
- 30 YR architectural shingles – also includes ice & water
- Wire shelf over washer and dryer setup
- Cabinet cove molding
- R-38 ceiling insulation
- 40-gallon electric water heater
- Washer and electric dryer prep (bifold doors incl)
- Whole house water shut off
- Carpet in bedrooms; Vinyl in Kit/DR,baths,hall,LR
- Stainless steel kitchen sink with S/L faucet with pull-out sprayer
- 9-lite fiberglass exterior rear door
- Furnace door
- Window in master bath & transom in main bath
- Extra LED recessed can lights in kitchen
- Ceiling fan in living room
- (1) phone and (2) TV jacks
- 60" shower with door in master bath
- Towel ring and tissue holder each bath
- Pantry cabinet and 4 drawer bank in kitchen
- Metal drawer guides
- Lighted exhaust fans in baths

See Sales Specialist For Pricing

Due to continuous product development & improvement, prices, specifications & materials are subject to change w/out notice or obligation.

ATLANTIC Homes Essentials Collection

Construction

- 2x6 Floor Joists 16" O.C.
- 2x6 Sidewalls 16" O.C.
- 20 lb. Roof 24" O.C.
- 8' Sidewalls
- Flat Stomped Ceilings
- Foam Core Sheathing
- Marriage Line Gasket
- Soffit/Fascia/Drip Edge
- Vinyl Covered Drywall Throughout
- Molding to Match Cabinetry Throughout
- Double 4.5" Dutch Lap Vinyl Exterior Siding
- Shutters - Front Door Side
- Architectural Shingles
- Heat Tape Receptacle

Electric

- 100 Amp Electric Service
- Recessed Can Lights in Kitchen
- Globe Light at Kitchen Sink
- Tulip Light Bars in Bathrooms
- Switched Receptacles in Living Room and Bedrooms
- Globe Lights in Dining Room
- Exterior Jar Lights Rear
- Wire & Vent for Electric Dryer

Baths

- GFI Receptacle
- 60" Tub/Shower
- Dual Knob Faucets
- Towel Bar & Tissue Holders
- 36" Vanity Height
- Plastic Sinks
- Mirror at Vanity (s)
- Laminate Countertop/Edge & Backsplash
- Porcelain Toilet
- Curtain Rod at Tub

Plumbing & Heating

- Whole House Interior Water Shut-off
- Plumb for Washer
- In-Line Heat Ducts
- Gas Furnace with Thermostat
- 30-Gallon Electric Water Heater

Kitchen

- 6" Stainless Steel Kitchen Sink
- 18 Cu Ft Refrigerator – Stainless Steel
- 30" Deluxe Gas Range – Stainless Steel/Black Combo.
- Power Vent Range Hood
- GFI Receptacle
- Laminate Countertop/Edge & Backsplash
- Wood Cabinet Doors
- MDF Stiles
- Bank of Drawers
- Fixed Overhead Shelf
- Cabinet Cove on Overhead Cabinets

Miscellaneous

- Combo Smoke/CO Detectors Per Code
- Carpet Pad
- Vinyl in Wet Areas
- 6-Panel White Interior Doors with Knobs
- Vented Shelves in Closets
- Wire Shelf over Washer/Dryer Area
- Mini Blinds if available due to supply shortage
- R-11 Floor Insulation
- R-19 Sidewall Insulation
- R-22 Roof Insulation
- 38" x 82" Sunburst Fiberglass Front Door (No Storm)
- 9-Lite Rear Door 34" x 82" (No Storm)
- Deadbolts on Exterior Doors (Keyed Alike)
- 36" x 60" and 30" x 36" Low-E Gridded Vinyl Windows
- Rod with Valance in Kitchen
- Choice of Decor

Due to continuous product development and improvement, prices, specifications, and materials are subject to change without notice or obligation. Square footage and other dimensions are approximate. Exterior images may be artist renderings and are not intended to be an accurate representation of the home. Renderings, photos and floor plans may be shown with optional features or third-party additions.