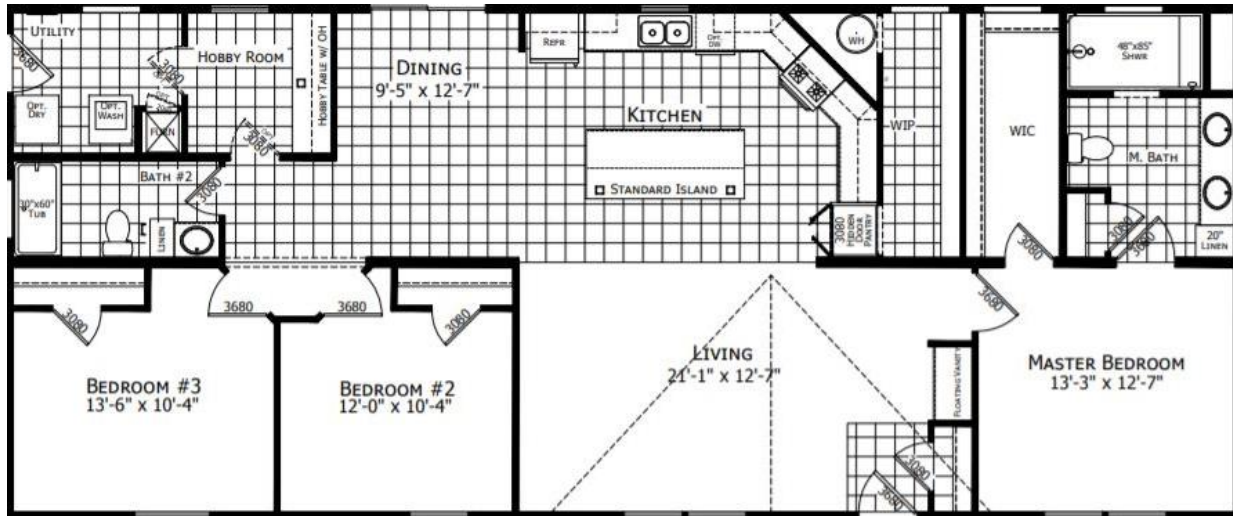


Atlantic 26402 (Hobby House)
28x68(64) | 1,707 Sq. Ft. | 3-bedroom 2-bath



Home featuring:

- 4" Massive Edge on Island
- Low E Vinyl Windows with Grids
- 4" Recessed Frame
- Ox Board Exterior Sheathing
- Mid Zone Snow Load
- 2 x 6 Exterior Side Walls
- R-19 Exterior Wall Insulation
- Linen Cabinet in Master & Hall Baths
- R-38 Roof Insulation
- R-11 Floor Insulation
- Hobby Room with Cabinets
- Roof Stack Extension
- Perimeter Heat
- Upgraded Gas Furnace with Programmable Thermostat
- Water Shut offs at Toilets & Sinks
- 40-gallon Electric Water heater IPO 30
- (2) Exterior Faucets
- 2-Panel Interior Doors
- Shower Lights
- Appliance Package including Dishwasher & Microwave
- Gas Range and 18 CU Refrigerator
- (2) Cable and (1) Phone Jack
- (4) Extra Recessed Lights in the Kitchen
- Recessed Ceiling lights in Bedrooms
- Paddle Fan with Light in Living Room
- 100-Amp Panel Box
- Amazon Shower IPO 1-Piece Fiberglass Tub in Master Bath
- 1-Piece Fiberglass Tub in Hall Bath
- Porcelain Vanity Sinks each Bath
- Extra Exterior GFI Receptacle
- Sliding Glass Door IPO 1 Window in DR
- Furnace Door
- Hickory Hardwood Cabinets & Stiles
- Vinyl Foyer
- Sunburst Front Door
- 9-Lite Side Door
- (5) Transom Windows
- Laminate Backsplash in Kitchen & Baths
- UK2 Farmers Stainless Steel Kitchen Sink
- Elongated Commodes
- Black Cage Lights over Island & in Dining Room
- Upgraded Moldings
- Whole House Shut Off

Due to continuous product development & improvement, prices, specifications & materials are subject to change w/out notice or obligation.

See sales specialist for pricing

ATLANTIC Homes Essentials Collections

Construction

- 2x6 Floor Joists 16" O.C.
- 2x6 Sidewalls 16" O.C.
- 20 lb. Roof 24" O.C.
- 8' Sidewalls
- Flat Stomped Ceilings
- Foam Core Sheathing
- Marriage Line Gasket
- Soffit/Fascia/Drip Edge
- Vinyl Covered Drywall Throughout
- Molding to Match Cabinetry Throughout
- Double 4.5" Dutch Lap Vinyl Exterior Siding
- Louvered Panel Shutters - Front Door Side
- 3-Tab 25-Year Shingles with Ridge Vent
- Heat Tape Receptacle

Electric

- 100 Amp Electric Service
- Recessed Can Lights in Kitchen
- Globe Light at Kitchen Sink
- Tulip Light Bars in Bathrooms
- Switched Receptacles in Living Room and Bedrooms
- Globe Lights in Dining Room
- Exterior Jar Lights Rear
- Wire & Vent for Electric Dryer

Baths

- GFI Receptacle
- 60" Tub/Shower
- Dual Knob Faucets
- Towel Bar & Tissue Holders
- 36" Vanity Height
- Plastic Sinks
- Mirror at Vanity (s)
- Laminate Countertop/Edge & Backsplash
- Porcelain Toilet
- Curtain Rod at Tub

Kitchen

- 6" Stainless Steel Kitchen Sink
- 18 Cu Ft Refrigerator – White or Black
- 30" Deluxe Gas Range – White or Black
- Power Vent Range Hood
- GFI Receptacle
- Laminate Countertop/Edge & Backsplash
- Wood Cabinet Doors
- MDF Stiles
- Bank of Drawers
- Fixed Overhead Shelf
- Cabinet Cove on Overhead Cabinets

Plumbing & Heating

- Whole House Interior Water Shut-off
- Plumb for Washer
- In-Line Heat Ducts
- Gas Furnace with Thermostat
- 30-Gallon Electric Water Heater

Miscellaneous

- Combo Smoke/CO Detectors Per Code
- Carpet
- Carpet Pad
- Vinyl in Wet Areas
- 6-Panel White Interior Doors with Knobs
- Vented Shelves in Closets
- Wire Shelf over Washer/Dryer Area
- Mini Blinds if available due to supply shortage
- R-11 Floor Insulation
- R-19 Sidewall Insulation
- R-22 Roof Insulation
- 38"x 82" Sunburst Fiberglass Front Door (No Storm)
- 34" x 82" Cottage Rear Door (No Storm)
- Deadbolts on Exterior Doors (Keyed Alike)
- 36" x 60" and 30" x 36" Low-E Gridded Vinyl Windows
- Rod with Valance in Kitchen
- Choice of Decor

Due to continuous product development and improvement, prices, specifications, and materials are subject to change without notice or obligation. Square footage and other dimensions are approximate. Exterior images may be artist renderings and are not intended to be an accurate representation of the home. Renderings, photos and floor plans may be shown with optional features or third-party additions.