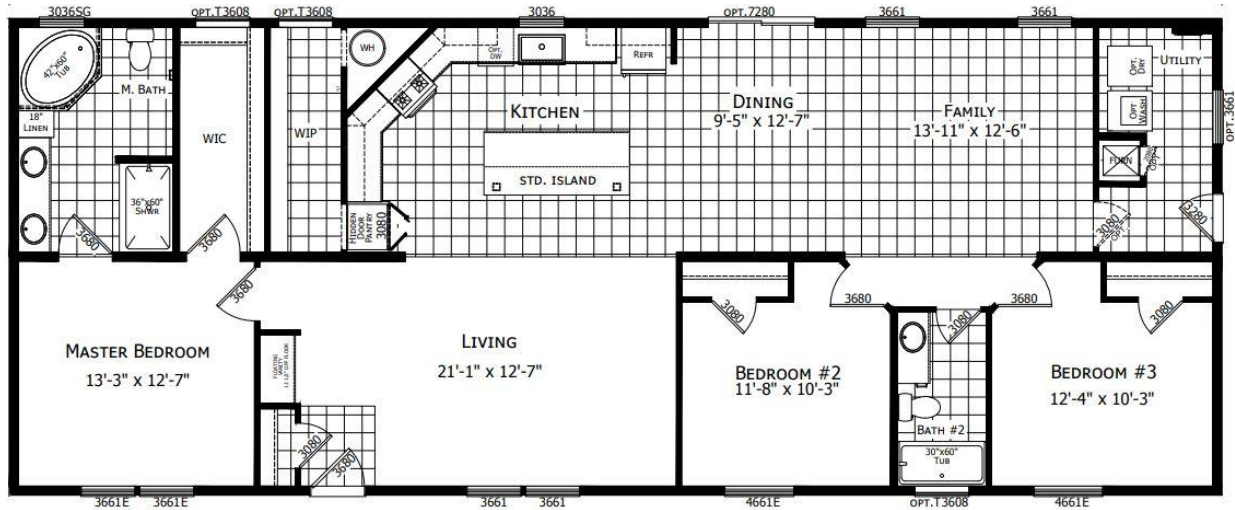


**Atlantic 26402**

**28x72(68) | 1,813 Sq. Ft. | 3-bedroom 2-bath**



**Home featuring:**

- Appliance Pkg.: SS Microwave & Dishwasher
- Gas Range, 18 CF Refrigerator
- 4" Recessed Frame
- OSB Exterior Wall Sheathing
- Mid Zone Snow Load
- 2x6 Exterior Side Walls
- R-38 Roof Insulation
- R-19 Exterior Wall Insulation
- R-11 Floor Insulation
- Linen Cabinet in Master Bath
- Towel Bar & Tissue Holders each bath
- Whole House Shut Off
- Furnace Stack Extension
- Perimeter Heat
- Upgraded Gas Furnace with Programmable Thermostat
- Water Shut offs at Toilets & Sinks
- 40-gallon Electric Water heater IPO 30
- Exterior Water Faucet
- 2-Panel Arched Top Interior Doors
- Thermal Pane Windows
- Window in Utility Room
- Can Light over Floating Cabinet in LR
- Upgraded Moldings in Living Areas
- (3) Cable Jacks and (1) Phone Jack
- (3) Extra Recessed Lights in the Kitchen
- Recessed Ceiling lights in Bedrooms
- Paddle Fan with Light in Living & Family Rooms
- 100-amp Panel Box
- 1-Piece Fiberglass Tub in Hall Bath
- Sweetheart bath Pkg: round soaking tub, 60" FG Shower stall, 30"x35" window in Master Bath
- Elongated Toilets
- Porcelain Vanity Sinks each Bath
- Furnace Door
- Sliding Glass Door IPO 1 Window in DR
- Walk-in Pantry Closet in Kitchen
- Hardwood Cabinet Doors & Stiles
- Vinyl Foyer
- Sunburst Front Door
- 9-Lite Side Door
- (3) Transom Windows
- Laminate Backsplash in Kitchen & Baths
- Stainless Steel Kitchen Sink
- Center Shelf in Kitchen Base Cabinets
- Black Cage Lights over Island & in Dining Room
- Plumbing for Ice Maker
- Note: Mini-blinds not included due to supply shortage

Due to continuous product development & improvement, prices, specifications & materials are subject to change w/out notice or obligation.

**See sales specialist for pricing**

# ATLANTIC Homes Essentials Collections

## Construction

- 2x6 Floor Joists 16" O.C.
- 2x6 Sidewalls 16" O.C.
- 20 lb. Roof 24" O.C.
- 8' Sidewalls
- Flat Stomped Ceilings
- Foam Core Sheathing
- Marriage Line Gasket
- Soffit/Fascia/Drip Edge
- Vinyl Covered Drywall Throughout
- Molding to Match Cabinetry Throughout
- Double 4.5" Dutch Lap Vinyl Exterior Siding
- Louvered Panel Shutters - Front Door Side
- 3-Tab 25-Year Shingles with Ridge Vent
- Heat Tape Receptacle

## Electric

- 100 Amp Electric Service
- Recessed Can Lights in Kitchen
- Globe Light at Kitchen Sink
- Tulip Light Bars in Bathrooms
- Switched Receptacles in Living Room and Bedrooms
- Globe Lights in Dining Room
- Exterior Jar Lights Rear
- Wire & Vent for Electric Dryer

## Baths

- GFI Receptacle
- 60" Tub/Shower
- Dual Knob Faucets
- Towel Bar & Tissue Holders
- 36" Vanity Height
- Plastic Sinks
- Mirror at Vanity (s)
- Laminate Countertop/Edge & Backsplash
- Porcelain Toilet
- Curtain Rod at Tub

## Kitchen

- 6" Stainless Steel Kitchen Sink
- 18 Cu Ft Refrigerator – White or Black
- 30" Deluxe Gas Range – White or Black
- Power Vent Range Hood
- GFI Receptacle
- Laminate Countertop/Edge & Backsplash
- Wood Cabinet Doors
- MDF Stiles
- Bank of Drawers
- Fixed Overhead Shelf
- Cabinet Cove on Overhead Cabinets

## Plumbing & Heating

- Whole House Interior Water Shut-off
- Plumb for Washer
- In-Line Heat Ducts
- Gas Furnace with Thermostat
- 30-Gallon Electric Water Heater

## Miscellaneous

- Combo Smoke/CO Detectors Per Code
- Carpet
- Carpet Pad
- Vinyl in Wet Areas
- 6-Panel White Interior Doors with Knobs
- Vented Shelves in Closets
- Wire Shelf over Washer/Dryer Area
- Mini Blinds if available due to supply shortage
- R-11 Floor Insulation
- R-19 Sidewall Insulation
- R-22 Roof Insulation
- 38"x 82" Sunburst Fiberglass Front Door (No Storm)
- 34" x 82" Cottage Rear Door (No Storm)
- Deadbolts on Exterior Doors (Keyed Alike)
- 36" x 60" and 30" x 36" Low-E Gridded Vinyl Windows
- Rod with Valance in Kitchen
- Choice of Decor

**Due to continuous product development and improvement, prices, specifications, and materials are subject to change without notice or obligation. Square footage and other dimensions are approximate. Exterior images may be artist renderings and are not intended to be an accurate representation of the home. Renderings, photos and floor plans may be shown with optional features or third-party additions.**