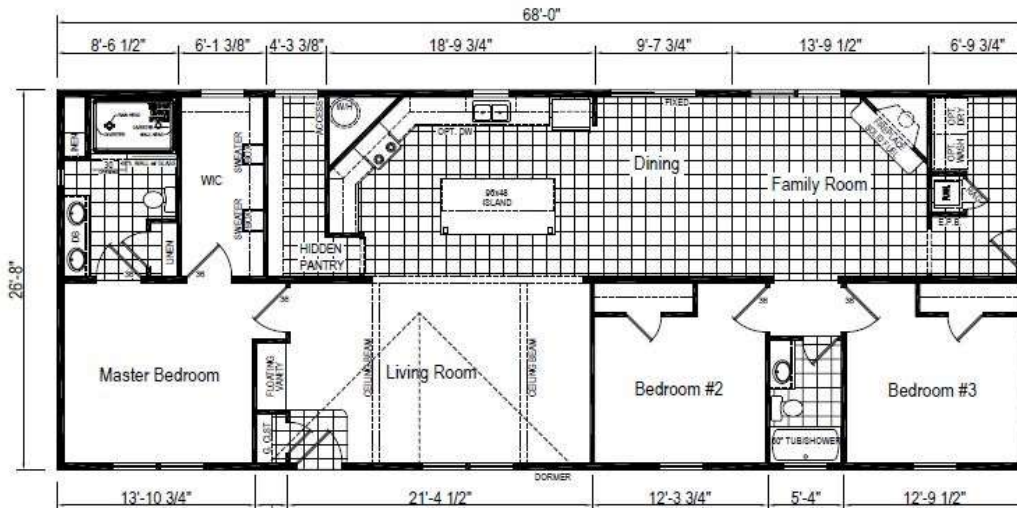


EAGLE RIVER

28X72 (68) | 3 Bed 2 Bath | 1,800 Square Feet



See Chesapeake Standards

Home also Features:

- Deliver, Block & Level*
- White Cabinets other than Island (Island with Ozark Cabinets)
- Crown Molding Impact Area
- Laminate Backsplash in Kitchen & Baths
- Upgraded Laminate @ Kitchen Island
- 5" Massive Edge on 48"x 94" Kitchen Island
- (1) Accent Wall
- Upgraded Drapery Pkg. in Mstr BR & LR
- Dormer
- Mid Zone Snow Load
- OSB Sheathing w/Wind Wrap
- Upgraded Gas Gun Furnace
- Programmable Thermostat with Nightlight
- R-38 Roof Insulation
- Perimeter Heat
- Furnace Stack Extension
- Upgraded Carpet
- Linoleum in Family Room
- Deluxe Appliance Package: 22CF SxS Refrigerator, Self Clean Gas Range, Dishwasher & Microwave
- Half Stacked Stone Wood Fireplace
- Sliding Glass Door
- (5) 36" Interior Doors
- (3) Extra Windows
- (3) Transom Windows
- (1) Extra Interior Receptacle
- Ceiling Fan w/Light in Living & Family Room
- (3) Extra Recessed Can Lights
- Deluxe Chandelier
- (1) Phone Jack
- (3) Cable Jacks
- Smoke and CO 2 Detectors to NYS Codes
- (2) Stem Lights
- 40-Gallon Electric Water Heater
- Whole House Water Shut Off
- (1) Exterior faucet
- 72"x48" Tiled Shower w/Glass Divider in Master Bath - incl. Rain Style Shower Head with Hand-held
- Double Bath Vanity Sink
- Tub Drape
- 3 Door Linen Cabinet in Master Bath
- Storage Cubby over Cabinets in Kitchen
- (2) Faux Wood Ceiling Beam in LR
- Dovetail Drawer Boxes w/Easy Glide Guides
- (2) 4-Lite Island Pendants
- (2) Sweater Box in Master Walk-in Closet

See sales specialist for pricing
*within 50 miles

The Ultimate Home Value with Quality, Durability, and Flexibility in Design

Chesapeake Standard Features

Construction

- 2" x 6" Exterior Walls at 16" O.C.
- 2" x 6" Floor Joists at 16" O.C.
- #2 or Better Lumber (14' Wide)
- 2" x 8" Floor Joists at 16" O.C.
- #2 or Better Lumber (16' Wide)
- 5/8" Tongue/Grove O.S.B. Floor Decking
- Wind Zone 1 Construction
- Zone III Insulation (R12/R19/R22)
(Thickness and R-values listed are certified by original manufacturer at time of installation, and may be reduced due to compression in floor, wall, and ceiling cavities)
- Removable Hitches
- 3/8" Fiberboard Backing
- Vinyl Siding / Shingle Roof
- Ridge Vent Construction with Fully Vented Eaves
- 8' Flat Textured Ceilings
- 3680 Fiberglass Front Door with Deadbolt Lock
- 3280 - 9 Lite Fiberglass Rear Door with Deadbolt Lock
- Thermal Windows with Grids
- Deluxe Raised Panel Shutters (Front Door Side on Doubles and Hitch End on Singles)
- Decorative Gypsum Interior Panels

Plumbing & Heating

- Ceramic Toilet Tank, 1.6-gal flush
- 1-Piece Fiberglass Tub/Shower
- Deep-Well Stainless-Steel White Kitchen Sink
- Cross-Handle Plumbing Fixtures
- Plumbing for Washer
- Water Shut-Off Valves
- Bath Vanity Mirrors

- China Bath Sink & Elongated Toilets
- 30 Gallon Water Heater / Dual Element with Overflow Drip Pan
- Electric Ignition Gas Furnace
- Furnace Door
- In-Floor Heat Duct Crossovers (Doubles)
- Center Seal at Mate Line (Doubles)

Appliances (if available)

- Gas Range
- 18 CU FT Refrigerator

Electric & Lighting

- 100 Amp Panel Box with 10-20 Breaker
- Bath Exhaust Fans
- Wire and Vent for Dryer
- GFI at Kitchen Counters & Bath Vanities
- Patio Lights at Front and Rear Doors
- Exhaust Vent Fan with Light in Kitchen
- Recessed Can Lights per plan

Floor Coverings

- Linoleum Flooring: Kitchen & Baths
- 7/16" – 6 lb. Rebond Carpet Pad
- Level I Carpet
- Carpet Bar at Transitions
- FHA Rated Carpet Available

Cabinets

- Wood Flat Panel Cabinet Doors with Hidden Hinges - *Available in Stratford Oak & Gray Ash (Hickory & White Flat Panel, Raised Panel Cabinets available)*

- 3-Drawer Bank in Kitchen
- Drawer Bank in Master bath (if fits)
- 36" High Vanities
- Overhead Cabinet Top Trim
- Overhead Cabinets Lined with Center Shelf
- Metal Drawer Guides
- Utensil Separator in Kitchen Drawer
- Formica Brand Counter Tops
- Euro Style Cabinet Pulls
- Shelf over Refrigerator Area
- Center Base Shelves in Kitchen
- Euro Style Cabinet Pulls

Miscellaneous

- 1 ½" Ceiling Molding
- Pre-Hung White 6 Panel Interior Passage Doors
- Satin Nickel Passage Doorknobs
- Vented Shelving throughout
- Shower Curtain in Tub Baths
- Color Coordinated Valance Drapery Package
- Mini blinds all Operating Windows
- Vented Shelving Throughout
- Towel & Tissue Holder in Bathrooms

Due to constant product improvement, all prices & specifications are subject to change without notice or obligation to Eagle River Homes. Dimensions are stated to industry standards. Width and length dimensions are nominal and not to be used for setup of home. The Square footage shown is nominal to exterior floor size.