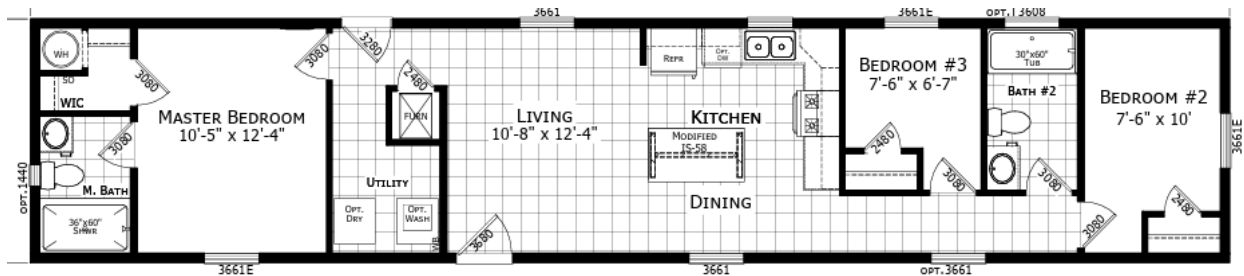


Atlantic Essentials: Model ESS-F-26610

14x70 (66) 880 Sq. Ft.



See Essentials Standards

Home Featuring:

- Deliver, block and level*
- 4" Recessed Frame
- Mid-zone Roof Load
- OSB Exterior Sheathing for extra strength
- Extra Shutter at Hall Window
- R-38 Ceiling Insulation
- 40 Gallon Electric Water Heater
- Shut-off Valves at all Sinks and Toilets
- (1) Exterior Faucet
- Lino Upgrade in Living Room & Front Hall
- Stainless Steel Microwave over Range
- Stainless Steel Dishwasher
- Upgraded Molding T/O
- Furnace Door
- Extra Low E Thermal Pane Windows:
14x40 in Master Bath
36x61 in Hall
- 36x8 Transom Window in Hall Bath
- (1) Phone Jack & (2) TV Jacks
- A/C Ready Conduit/Breaker
- (3) Extra LED Recessed Can Lights in Kitchen
- LED Recessed Can Light in each Bedroom
- Ceiling Fan with Light Kit in Living Room
- 60" Shower with Shower Door in Master Bath
- Island in Kitchen

See Sales Specialist For Pricing

*Due to continuous product development & improvement, prices, specifications & materials are subject to change w/out notice or obligation. *within 50 miles*

ATLANTIC Homes Essentials Collection (as of 4/30/2025)

Construction

- 2x6 Floor Joists 16" O.C.
- 2x6 Sidewalls 16" O.C.
- 20 lb. Roof 24" O.C.
- 8' Sidewalls-Flat Stomped Ceilings
- Vinyl Covered Drywall Throughout
- Architectural Shingles w/Ridge Vent
- Marriage Line Gasket
- Heat Tape Receptacle
- Nominal 3/12 Roof
- R-11 Floor Insulation
- R-19 Sidewall Insulation
- R-22 Roof Insulation

Exterior

- 38"x82"-4-Lite Fiberglass Front Door (No Storm)
- 9-Lite Rear or Side Door (No Storm)
- Deadbolts on Exterior Doors (Keyed Alike)
- Low-E Grid Vinyl Windows-Per Plan
- Foam Core Exterior Sheathing
- Double Dutch Lap Vinyl Exterior Siding
- Shutters-Front Door Side/Hitch End

Interior

- Choice of Décor
- National Brand Carpet
- 5 lb. Carpet Pad
- Vinyl in Wet Areas
- White Interior Doors w/Knobs
- Vented Shelves in Closets
- Wire Shelf Over Washer/Dryer Area
- Window Blinds Throughout
- Molding Throughout

Plumbing & Heating

- Whole House Interior Water Shut-off
- Plumb for Washer
- In-Line Heat Ducts
- H.E. Gas Furnace w/Programmable Thermostat
- 30-Gallon Electric Water Heater

Electrical

- 100 Amp Electric Service
- LED Can Light at Kitchen Sink
- Switched Receptacle in LR & BR's
- LED Can Light in Dining Room
- Wire & Vent for Electric Dryer
- Combination Smoke/CO Detectors Per Code

Kitchen

- 6" Stainless Steel Kitchen Sink
- 18 Cu Ft Refrigerator
- 30" Deluxe Gas Range
- Power Vent Range Hood
- GFI Receptacle
- Laminate Countertop, Edge & Backsplash
- Wood Cabinet Doors & Stiles (Excludes White)
- Wood Cabinet Doors w/Wood Stiles (Excludes White Cab-these are MDF Stiles)
- Bank of Drawers
- Fixed Shelf in Overhead Shelf
- Shelf Over Refrigerator
- Cabinet Cove on Overhead Cabinets

Bathroom

- GFI Receptacle
- 1-Piece Tub/Shower
- Dual-Knob Faucets
- Towel Bar & Tissue Holders
- 36" Vanity Height-Porcelain Sinks
- Mirror & LED Can Light at Vanity(s)
- Laminate Countertop, Edge & Backsplash
- Porcelain Toilet
- Curtain Rod at Tub
- Vent Fan

Due to continuous product development and improvement, prices, specifications, and materials are subject to change without notice or obligation. Square footage and other dimensions are approximate. Exterior images may be artist renderings and are not intended to be an accurate representation of the home. Renderings, photos and floor plans may be shown with optional features or third-party additions.

atlantichomespa.com