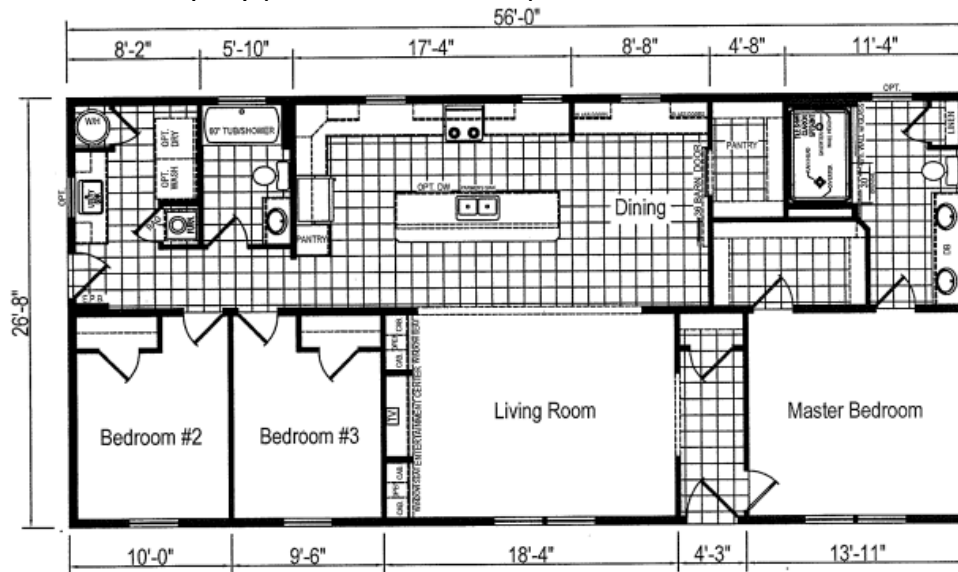


EAGLE RIVER CD-60J1071-X
28X60(56) | 1,493 SQ FEET | 3 BEDROOM, 2 BATH



The Ultimate Home Value with Quality, Durability, and Flexibility in Design

Featuring:

- Deluxe White Molding Pkg. 3 5/8" T/O
- Ozark Gray Flat Panel Cabinets in Kitchen
- Upgraded Countertops & Ceramic Tile Backsplash Counter to Cabinet in Kitchen
- Drywall in Living Room & Foyer
- Accent Wall in Master Bedroom
- 2X6 Exterior Walls with OSB Exterior Wall Sheathing
- R-19 Exterior Wall Insulation
- R-38 Ceiling Insulation
- 5/12 Mid Zone Roof with Architectural Shingles
- Ice Guard & Wind Wrap
- Upgraded Siding
- Deluxe Shutters Front Windows
- High Efficiency Gas Furnace
- Floor Mount Perimeter Heat Registers
- Upgraded Carpet
- Vinyl Foyer
- SS Appliance Package to include: Self-Clean Gas Range, 22CF Side by Side Refrigerator with water & ice, Dishwasher, Microwave
- Sunburst front door
- 9-lite rear door
- White Interior Doors at Furnace & Water Heater
- Barn Door at walk-in Pantry
- 6-Panel White Interior Doors w/Lever Handles
- Window in Master Bath & Transom in Hall Bath
- Window in Utility Room
- Prep for Washer & Dryer
- Ceiling Fan in Living Room
- Tulip Vanity Lights over Double Bowl Vanity Master Bath
- Deluxe Chandelier in Dining Room
- Extra Recessed Can Lighting T/O
- Bedroom Ceiling Lights
- (2) TV Jacks (1) Phone Jack
- Lighted Bath Fans in Both Baths
- Smoke and CO 2 detectors to NYS Codes
- 40-gallon electric water heater IPO 30-gallon
- Water shut offs throughout
- Interior Whole house water shut off
- Exterior faucet (1)
- 48x72 Ceramic Tiled Shower w/Glass Divider Master Bath
- 60" 1-piece Tub/Shower Main Bath
- China Bath Sinks & Elongated Toilets
- Kitchen Island w/SS Farm Sink w/Pull Down Faucet
- Utility Sink w/Extra Base & Overhead Cabinets
- Hardwood Cabinet Doors & Stiles
- Towel and Tissue Holders
- Walk-in Pantry & Cabinet Pantry in Kitchen
- Lined Overhead Kitchen Cabinets
- Adjustable 3/4" Overhead Cabinet Shelves
- Center Base Shelves
- Shelf Over Refrigerator
- Hutch in Kitchen w/Glass Overhead Doors
- Entertainment Center in Living Room w/Bench Seats

Display Serial #ER-10207AB

Shown with Chesapeake Standard Features

Chesapeake Standard Features

Construction

- 2" x 6" Exterior Walls at 16" O.C.
- 2" x 6" Floor Joists at 16" O.C.
- #2 or Better Lumber (14' Wide)
- 2" x 8" Floor Joists at 16" O.C.
- #2 or Better Lumber (16' Wide)
- 5/8" Tongue/Grove O.S.B. Floor Decking
- Wind Zone 1 Construction
- Zone III Insulation (R12/R19/R22) (Thickness and R-values listed are certified by original manufacturer at time of installation, and may be reduced due to compression in floor, wall, and ceiling cavities)
- Removable Hitches
- 3/8" Fiberboard Backing
- Vinyl Siding / Shingle Roof
- Ridge Vent Construction with Fully Vented Eaves
- 8' Flat Textured Ceilings
- 3680 Fiberglass Front Door with Sunburst and Deadbolt Lock
- 3280 - 9 Lite Fiberglass Rear Door with Deadbolt Lock
- Thermal Windows with Grids
- Deluxe Raised Panel Shutters (Front Door Side on Doubles and Hitch End on Singles)
- Decorative Gypsum Interior Panels

Plumbing & Heating

- Ceramic Toilet Tank, 1.6 gal flush
- 60" Tub with Acrylic Surround
- Deep-Well Stainless-Steel White Kitchen Sink
- Cross-Handle Plumbing Fixtures
- Plumbing for Washer
- Water Shut-Off Valves
- Bath Vanity Mirrors
- 30 Gallon Water Heater / Dual Element with Overflow Drip Pan
- Electric Ignition Gas Furnace
- Furnace Door
- In-Floor Heat Duct Crossovers (Doubles)
- Center Seal at Mate Line (Doubles)

Appliances (if available)

- Gas Range
- 18 CUFT Refrigerator

Electric & Lighting

- 100 Amp Panel Box with 10-20 Breaker
- Lighted Bath Exhaust Fans, 50 CFM
- Wire and Vent for Dryer
- GFI at Kitchen Counters & Bath Vanities
- Patio Lights at Front and Rear Doors
- Exhaust Vent Fan with Light in Kitchen
- Frosted Glass Light Fixtures

Floor Coverings

- Linoleum Flooring: Kitchen & Baths
- 7/16" – 6 lb. Rebond Carpet Pad
- Level I Carpet (14' Wide)
- Carpet Bar at Transitions
- FHA Rated Carpet Available

Cabinets

- Wood Flat Panel Cabinet Doors with Hidden Hinges - *Available in Stratford Oak, Java & Gray Ash (Hickory & White Flat Panel, Raised Panel Cabinets available)*
- 3-Drawer Bank in Kitchen
- Drawer Bank in Master bath (if fits)
- 36" High Vanities
- Overhead Cabinet Top Trim
- Overhead Cabinets Lined with Center Shelf
- Metal Drawer Guides
- Utensil Separator in Kitchen Drawer
- Formica Brand Counter Tops
- Euro Style Cabinet Pulls
- Shelf over Refrigerator Area
- Center Base Shelves in Kitchen
- Euro Style Cabinet Pulls

Miscellaneous

- 1 ½" Ceiling Molding
- Pre-Hung White 6 Panel Interior Passage Doors
- Satin Nickel Passage Doorknobs
- Vented Shelving throughout
- Shower Curtain in Tub Baths
- Color Coordinated Valence Drapery Package
- Mini blinds all Operating Windows
- Vented Shelving Throughout
- Towel & Tissue Holder in Bathrooms

Due to constant product improvement, all prices & specifications are subject to change without notice or obligation to Eagle River Homes. Dimensions are stated to industry standards. Width and length dimensions are nominal and not to be used for setup of home. The Square footage shown is nominal to exterior floor size.