

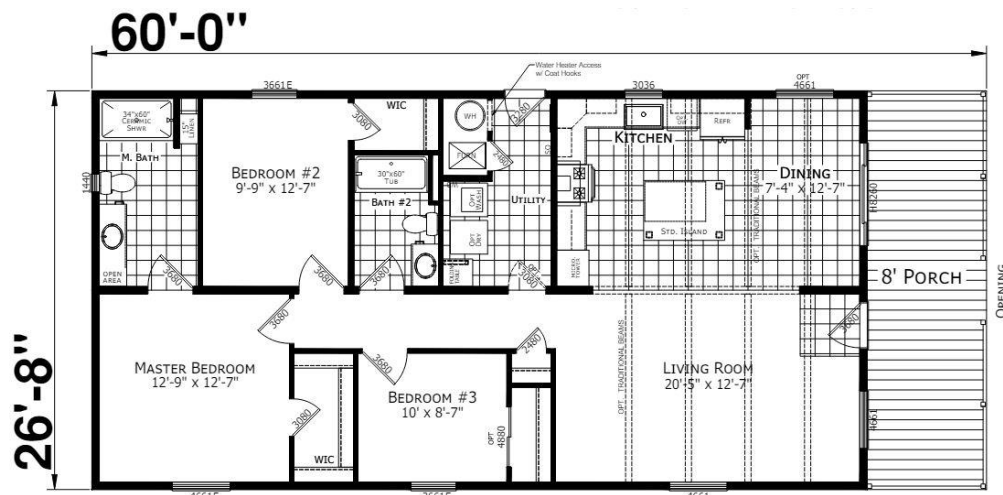
Atlantic Essentials

ESD-A-25207

28x64(60)

1,600 Sq.Ft.

3 Bedroom, 2 Bath



HOME FEATURES:

- Delivery, Block & Level*
- Glass Backsplash behind range
- Drywall in Living Room and Hall
- 8" Recessed frame
- OSB Exterior Sheathing
- Mid-zone Roof with Architectural Shingled Roof
- 8' Full Porch with Black Iron Railing
- Cedar Shake Vinyl Siding in Porch Peak
- Pine Décor Package
- R-38 Roof Insulation
- Perimeter Heat
- 40 Gallon Electric Water Heater w/ access door
- Water Shut Offs at all Toilets & Sinks
- Exterior Water Faucet
- Lino Foyer
- Stainless Steel Range Hood "Euro Style"
- Stainless Steel Side by Side Refrigerator
- Stainless Steel Dishwasher
- Stainless Steel Microwave built in Cabinet
- Relocate Front Door to Gable End
- Furnace Door
- Bypass Sliding Door at Closet
- Extra Window in Dining Room
- Window in Master Bathroom
- Picture Window in Dining Room
- Phone and TV Jacks
- A/C Ready Conduit with Breaker
- (4) Extra Recessed Can Lights in Kitchen
- (3) Extra Recessed Can Lights in Dining Room
- (2) Recessed Can Lights in Covered Porch
- Ceiling Fan in Living Room
- Recessed Can Lights in Bedrooms
- Black Shade Pendant Lights over Island
- 60" Ceramic Shower in Master Bath
- UK3 Farm Sink in Kitchen
- Hickory Cabinet Doors with Wood Stiles
- Black Cabinet Pulls
- Due to continuous product development & improvement, prices, specifications & materials are subject to change w/out notice or obligation. *Within 50 miles of Sales Center

ATLANTIC Homes Essentials Collections (as of 7/26/2024)

Construction

- 2x6 Floor Joists 16" O.C.
- 2x6 Sidewalls 16" O.C.
- 20 lb. Roof 24" O.C.
- 8' Sidewalls
- Flat Stomped Ceilings
- Foam Core Sheathing
- Marriage Line Gasket
- Soffit/Fascia/Drip Edge
- Vinyl Covered Drywall Throughout
- Molding to Match Cabinetry Throughout
- Double 4.5" Dutch Lap Vinyl Exterior Siding
- Louvered Panel Shutters - Front Door Side
- Architectural Shingles with Ridge Vent
- Heat Tape Receptacle

Electric

- 100 Amp Electric Service
- Recessed Can Lights in Kitchen
- Globe Light at Kitchen Sink
- Tulip Light Bars in Bathrooms
- Switched Receptacles in Living Room and Bedrooms
- Globe Lights in Dining Room
- Exterior Jar Lights Rear
- Wire & Vent for Electric Dryer

Baths

- GFI Receptacle
- 60" Tub/Shower
- Dual Knob Faucets
- Towel Bar & Tissue Holders
- 36" Vanity Height
- Porcelain Sinks
- Mirror at Vanity (s)
- Laminate Countertop/Edge & Backsplash
- Porcelain Toilet
- Curtain Rod at Tub

Kitchen

- 6" Stainless Steel Kitchen Sink
- 18 Cu Ft Refrigerator – White or Black
- 30" Deluxe Gas Range – White or Black
- Power Vent Range Hood
- GFI Receptacle
- Laminate Countertop/Edge & Backsplash
- Wood Cabinet Doors
- MDF Stiles
- Bank of Drawers
- Fixed Overhead Shelf
- Cabinet Cove on Overhead Cabinets

Plumbing & Heating

- Whole House Interior Water Shut-off
- Plumb for Washer
- In-Line Heat Ducts
- H.E. Gas Furnace w/Programmable Thermostat
- 30-Gallon Electric Water Heater

Miscellaneous

- Combo Smoke/CO Detectors Per Code
- Carpet
- Carpet Pad
- Vinyl in Wet Areas
- 3-Panel White Interior Doors with Knobs
- Vented Shelves in Closets
- Wire Shelf over Washer/Dryer Area
- Mini Blinds if available due to supply shortage
- R-11 Floor Insulation
- R-19 Sidewall Insulation
- R-22 Roof Insulation
- 38"x 82" 4-Lite Fiberglass Front Door (No Storm)
- 34" x 82" 9-Lite Side/Rear Door (No Storm)
- Deadbolts on Exterior Doors (Keyed Alike)
- 36" x 60" and 30" x 36" Low-E Gridded Vinyl Windows
- Rod with Valance in Kitchen
- Choice of Decor

Due to continuous product development and improvement, prices, specifications, and materials are subject to change without notice or obligation. Square footage and other dimensions are approximate. Exterior images may be artist renderings and are not intended to be an accurate representation of the home. Renderings, photos and floor plans may be shown with optional features or third-party additions.